

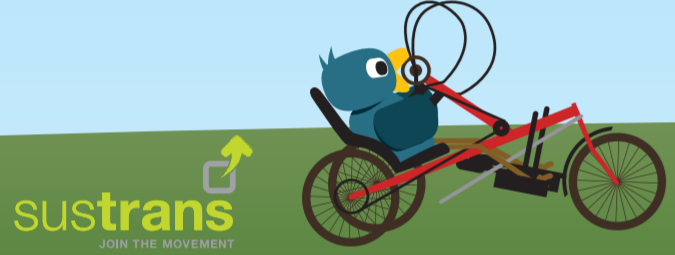


Local National Cycle Network routes

If you're a cycle commuter, a leisure walker or a long-distance bike tourist - join the million-plus people that love using Sustrans' well-signed National Cycle Network every single day.

Spanning the UK, the Network's 13,400 miles of walking and cycling routes include:

- scenic traffic-free paths
- quiet roads and lanes
- signed on-road routes
- themed long-distance routes



Cycle shops

There are a number of cycle shops in Portsmouth offering new bikes, accessories and servicing.

- 1 Portsmouth Cycle Exchange**
023 9281 5918
4-8 Victoria Rd North, PO5 2DF
- 2 Donald's BMX store**
023 9285 1457
Southsea Skatepark, Clarence Esplanade, Southsea PO5 3NZ
www.donaldsbmxstore.com
- 3 NR Cycle Accessories**
023 9267 1558
213 New Road, PO2 7QU
- 4 Community Cycle Centre**
(Recycled bikes)
07407 374 497
community@pompeybug.org.uk
www.pompeybug.org.uk
Stacey Centre, Walsall Road, PO3 6DN
- 5 Cycle World Wessex**
023 9266 6500
373 London Road, PO2 9HJ
- 6 Cooper's Cycle**
023 9238 5666
8 Highbury Buildings, Portsmouth Road, PO6 2SN
- 7 Velocity Bikes**
023 9237 1000
Units 8-10 The Interchange, Portsmouth Road PO6 2AE
- 8 Cycles Galore**
023 9238 9824
55 High St, Cosham, PO6 3AX
- 9 Snow and Rock**
023 9220 5388
Port Solent, PO6 4TP
- 10 Halfords**
023 9267 1242
Ocean Park, Burrfields Rd, PO3 5NP
- 11 Haslemere Cycles**
023 9275 2952
249 Albert Road PO4 0JR
- 12 Ye Olde Bike Shoppe**
07887 973014
Waverley Road, Southsea, PO4 0JS
- 13 Bicycle Recycling:**
The Ferry Shop, Gosport Bus Station, Gosport PO12 1EP
contact@bicyclerecycling.co.uk
www.bicyclerecycling.co.uk



Polite cycling

If you ride a bike, give yourself a pat on the back for being green, healthy and reducing traffic congestion. But please make sure you stay off the pavement, obey traffic rules and use shared paths considerately. Not all cyclists realise how much they can frighten people walking on the path, especially older people.

All of us – drivers and pedestrians too – need to be more polite to one another in a busy city.



Highway Code

Portsmouth is flat, which makes it ideally suited to cycling and walking. Everyday trips to the shops, school, college, university and work are relatively short, often less than a mile or two, making most journeys easily walkable or, for those slightly longer distances, bikeable.

This map is designed to show walking and cycling routes that are mainly low-traffic or traffic free. These routes take advantage of the 20mph limit on the city's residential roads and the cycle lanes and cut-throughs we already have. In some places it has been necessary to use slightly busier roads to connect the network. For those cycling, this map is most useful for families, new and returning cyclists and those who prefer to use roads with less traffic.

While the cycle routes are also ideal for walking, you can use the map to plan your own route as it shows Portsmouth's extensive network of footpaths, crossing points and subways.



Highway Code

Remember the Highway Code applies to cyclists as well as other road users.

It is illegal to cycle on the pavement unless the signs say otherwise.

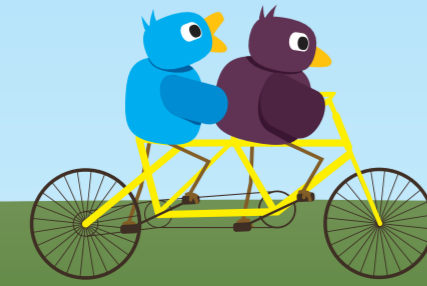
Remember even on a shared path pedestrians have the right of way.

You must obey all traffic signs and signals.

You must display front and rear lights at night as well as a rear reflector.

A bell is useful.

www.direct.gov.uk/highwaycode



Road signs

- Route recommended for bikes
- Shared walking and cycle route - give way to pedestrians
- Segregated cycle and walking route - give way to pedestrians
- Two-way cycling in one-way road
- Bus, cycle and taxi lane ahead
- National Cycle Network route
- Warning - cycle lane ahead
- No cycling



Bike security

Don't leave your bike unlocked even for a minute.

Take valuables with you.

Lock the frame to something solid

Use a good quality lock - and keep it off the ground

Take a picture of you and your bike together for identification purposes

Make a note of your bike make, model and frame number

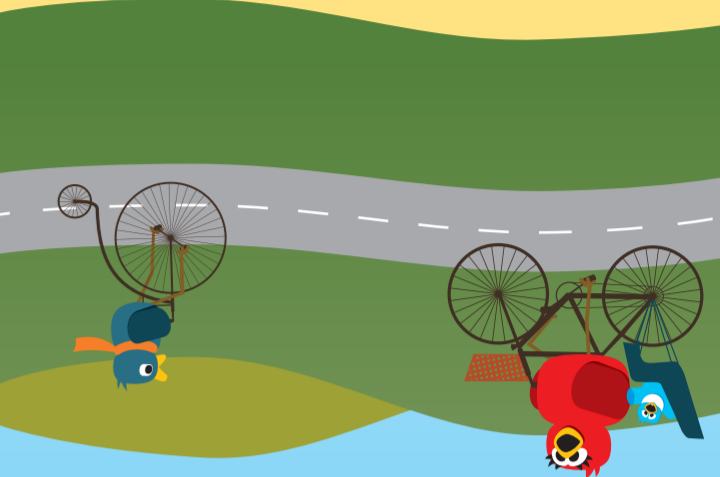


Useful contacts

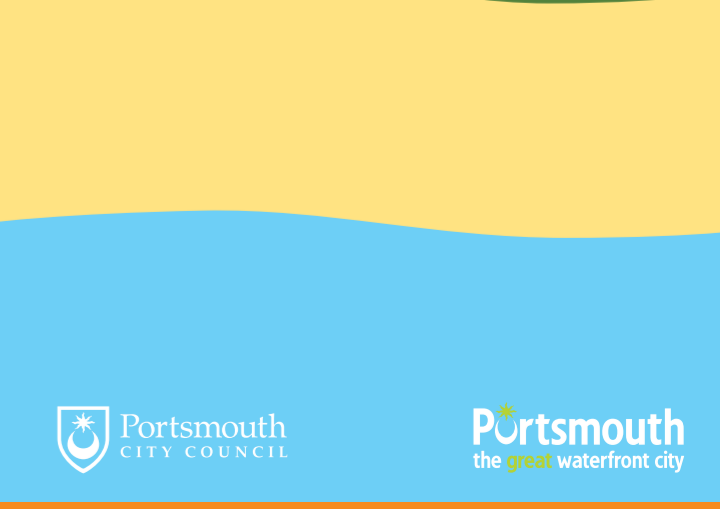
- Portsmouth City Council Helpdesk**
023 9283 4092
travel@portsmouthcc.gov.uk
cityhelpdesk@portsmouthcc.gov.uk
- National Rail Enquiries**
08457 484950 www.nationalrail.co.uk
- Gosport Ferry**
023 9252 4551 info@gosportferry.co.uk
- Hayling Ferry**
023 9248 2868 www.haylingferry.co.uk
- Sustrans**
info@sustrans.org.uk www.sustrans.org.uk
- CTC**
cycling@ctc.org.uk www.ctc.org.uk
- Cycle training**
www.dft.gov.uk/bikeability
023 9283 4092 roadsafety@portsmouthcc.gov.uk
- Portsmouth Cycle Forum**
contact@pompeybug.org.uk www.pompeybug.org.uk
- Cycle route planner**
www.cyclestreets.net
- Walking route planner**
www.walkit.com/cities/portsmouth
- Bus route planner**
www.transportdirect.info

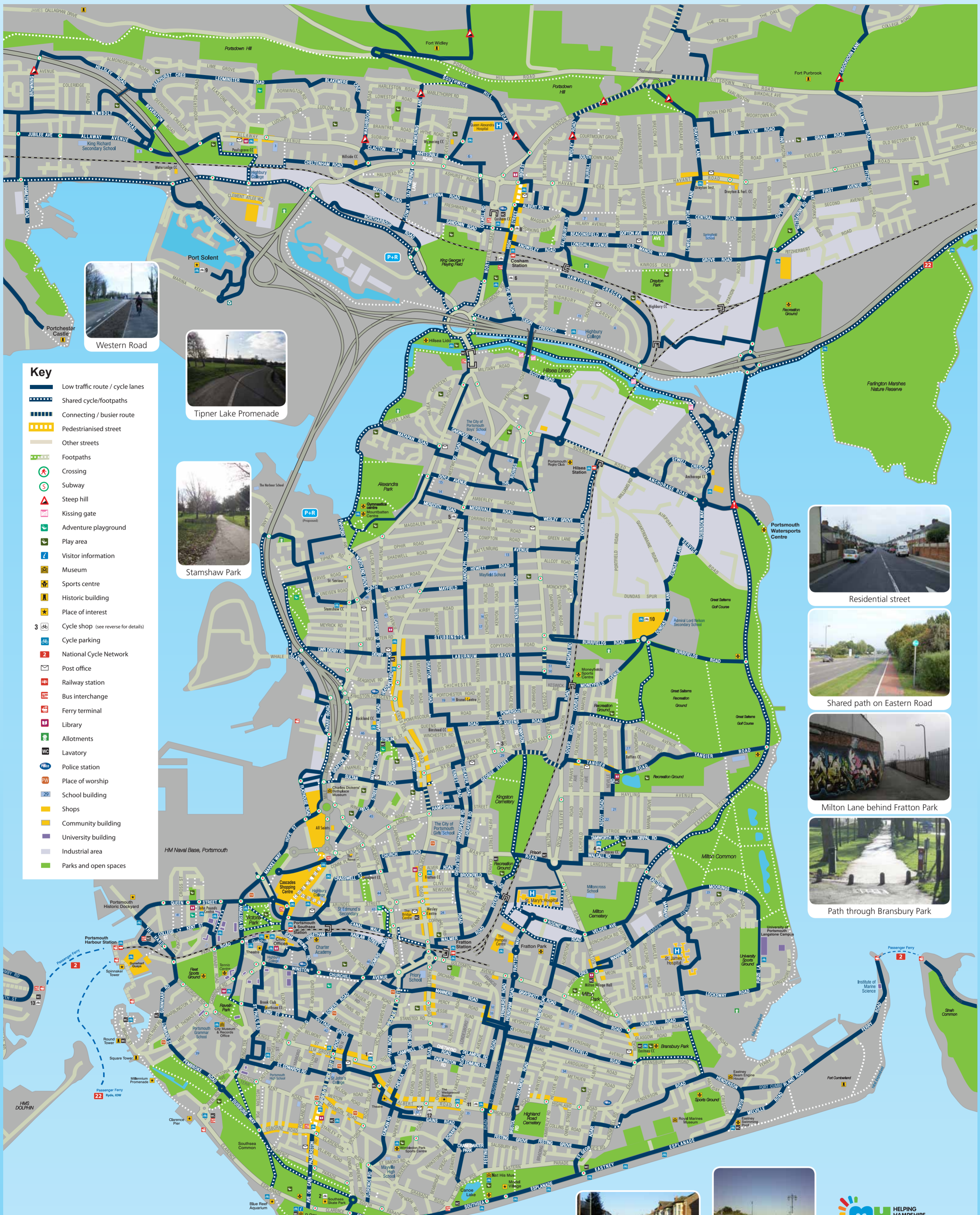
Pedal Power Training is delighted to be the provider of the National Cycle Training Programme to children in Portsmouth. To find out more about the Bikeability programme, please visit www.dft.gov.uk/bikeability or contact us at www.pedalpowertraining.co.uk or 023 9229 0474

You can get this Portsmouth City Council information in large print, Braille, audio or in another language by calling 9282 9923.



This map has been produced by and remains copyright of Portsmouth City Council who have made every effort to ensure that the information contained herein is correct at time of printing. PCC cannot be held responsible for changes that occur after printing but will try to update the map as often as practicable. If you are aware of any errors, omissions or updates please contact travel@portsmouthcc.gov.uk





Key

- Low traffic route / cycle lanes
- - - Shared cycle/footpaths
- - - - Connecting / busier route
- Pedestrianised street
- Other streets
- Footpaths
- X Crossing
- S Subway
- ▲ Steep hill
- K Kissing gate
- A Adventure playground
- P Play area
- I Visitor information
- M Museum
- S Sports centre
- H Historic building
- * Place of interest
- C Cycle shop (see reverse for details)
- P Cycle parking
- N National Cycle Network
- P Post office
- R Railway station
- B Bus interchange
- F Ferry terminal
- L Library
- W Allotments
- WC Lavatory
- PS Police station
- W Place of worship
- S School building
- S Shops
- C Community building
- U University building
- I Industrial area
- P Parks and open spaces



Western Road



Tipner Lake Promenade



Stamshaw Park



Residential street



Shared path on Eastern Road

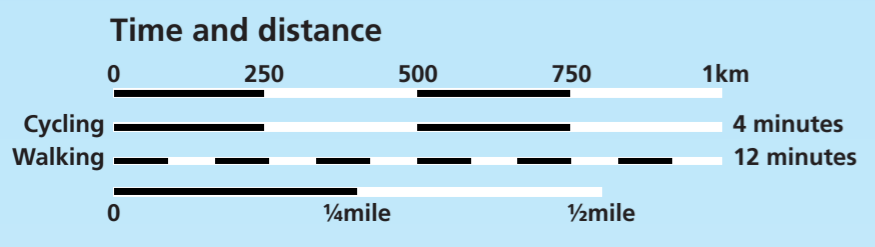


Milton Lane behind Fratton Park



Path through Bransbury Park

walking and cycling map



Infant & Primary Schools*

- | | | | |
|---------------------------|----------------------------|-----------------------------------|-------------------------------------|
| 1. Victory Primary | 14. Northern Parade Infant | 27. Westover Primary | 40. Somers Park Primary |
| 2. St. Paul's Primary | 15. Northern Parade Junior | 28. Milton Park Federated Primary | 41. St. George's Beneficial Primary |
| 3. Paulsgrove Primary | 16. College Park Infant | 29. Newbridge Junior | 42. Cottage Grove Primary |
| 4. Redwood Park | 17. Lyndhurst Junior | 30. Wimborne Junior | 43. St. John's Primary |
| 5. Medina Primary | 18. Meredith Infant | 31. Wimborne Junior | 44. Arundel Court Infant & Junior |
| 6. Portsmouth Primary | 19. Isambard Brunel Junior | 32. Ferrhurst Junior | 45. Charles Dickens Infant & Junior |
| 7. Court Lane Junior | 20. Manor Infant | 33. Devonshire Infant | 46. Flying Bull Primary |
| 8. Court Lane Infant | 21. Langstone Junior | 34. Cumberland Infant | 47. Corpus Christi Primary |
| 9. Solent Junior | 22. Langstone Infant | 35. Cranwater Junior | 48. Stamshaw Infant |
| 10. Solent Infant | 23. Moorings Way Infant | 36. Goldsmith Infant | 49. Stamshaw Junior |
| 11. Highbury Primary | 24. Penhale Infant | 37. Southsea Infant | 50. Copnor Infant |
| 12. Gatcombe Park Primary | 25. Meon Junior | 38. Brambles Nursery (PCC) | 51. Copnor Junior |
| 13. Cliffdale Junior | 26. Meon Infant | 39. St. Jude's Primary | 52. St. Swithun's Primary |

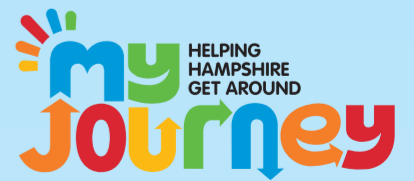
*secondary schools named on map



Southsea residential street



Seafront cycle route



Portsmouth the great waterfront city

